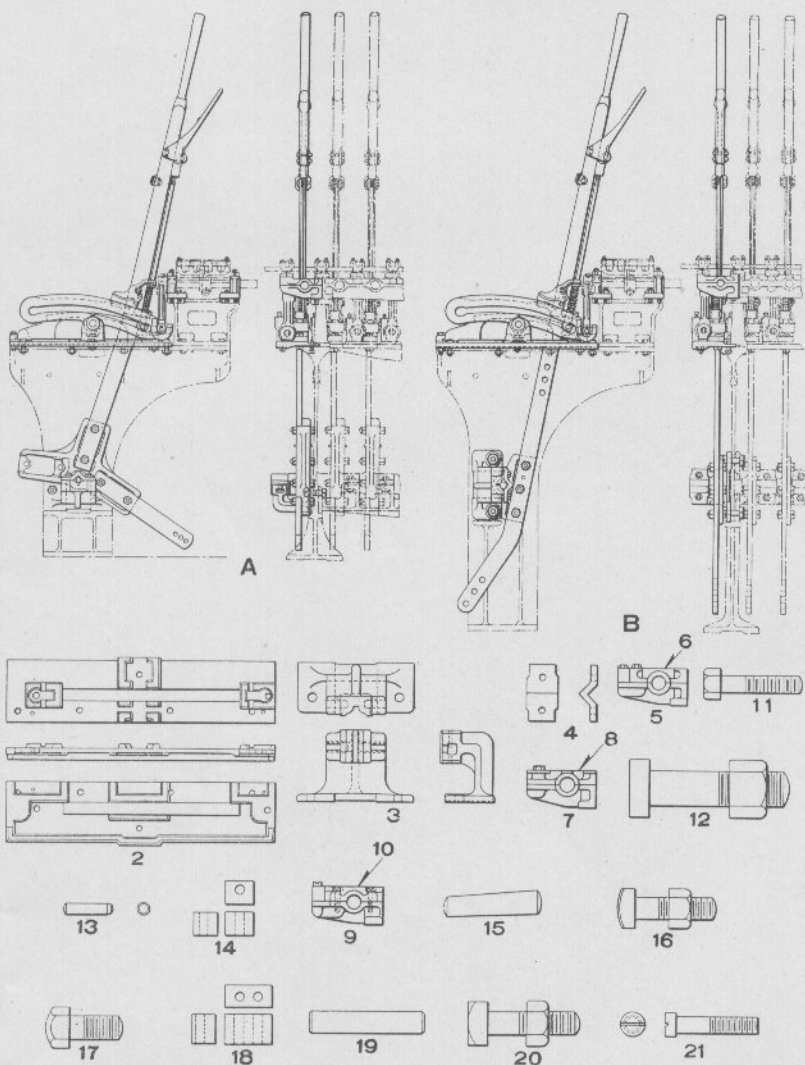


UNION SWITCH & SIGNAL COMPANY



FITTINGS FOR ADDING AN EXTRA LEVER TO THE
END OF AN EXISTING MACHINE

UNION SWITCH & SIGNAL COMPANY

THE SAXBY AND FARMER INTERLOCKING MACHINE ARRANGED FOR VERTICAL AND HORIZONTAL LEADOUT

FITTINGS FOR ADDING AN EXTRA LEVER TO THE END OF AN EXISTING MACHINE

For Levers and details refer to Plates A-112 and A-113.

For Locking Brackets, Etc., refer to Plates A-110 and A-111.

Orders must specify number of Lever so that proper number plate may be furnished.

Order by Plate, Piece, Reference and Abbreviated Description Given in
Heavy Face Type Only.

Drawing references are shown for convenience in checking material with
shipping lists and invoices.

Piece	Ref.	Description	Drawing Reference
	A	Lever and Fittings for right hand end of Machine having Vertical leadout (For single hole locking brackets) complete as shown. Orders must specify Lever required referring to Refs. A to Fc Plate A-112	D-897-4
	Aa	Lever and Fittings for right hand end of Machine having vertical leadout (For double hole locking brackets) complete. Orders must specify Lever required referring to Refs. A to Fc Plate A-112.....	D-897-4
	Ab	Lever and Fittings for left hand end of Machine having Vertical leadout (For single hole locking brackets) complete. Orders must specify Lever required referring to Refs. A to Fc Plate A-112.....	D-897-4
	Ac	Lever and Fittings for left hand end of Machine having vertical leadout (For double hole locking brackets) complete. Orders must specify Lever required referring to Refs. A to Fc Plate A-112.....	D-897-4
94572	B	Lever and Fittings for right hand end of machine having Horizontal leadout (For single hole locking bracket) complete as shown.....	D-897-4
94573	Ba	Lever and Fittings for right hand end of Machine having horizontal leadout (For double hole locking bracket) complete.....	D-897-4
94574	Bb	Lever and Fittings for left hand end of Machine having horizontal leadout (For single hole locking bracket) complete.....	D-897-4

UNION SWITCH & SIGNAL COMPANY

THE SAXBY AND FARMER INTERLOCKING MACHINE ARRANGED FOR VERTICAL AND HORIZONTAL LEADOUT

FITTINGS FOR ADDING AN EXTRA LEVER TO THE END OF AN EXISTING MACHINE

(Continued)

Order by Plate, Piece, Reference and Abbreviated Description Given in
Heavy Face Type Only.

Drawing references are shown for convenience in checking material with shipping lists and invoices.

Piece	Ref.	Description	Drawing Reference
94575	Bc	Lever and Fittings for left hand end of Machine having horizontal leadout (For double hole locking bracket) complete.....	D-897-4
4894	2	R. H. Top Plate only, for 1-lever.....	B-4533-11
	2a	R. H. Top Plate, with Bolts and Pins (Inc. 1-2, 4-16 and 2-15).....	B-4533-11
4895	2b	L. H. Top Plate only, for 1-lever.....	B-4533-1
	2c	L. H. Top Plate, with Bolts, Screws and Pins (Inc. 1-2b, 2-16, 1-17 and 2-15).....	B-4533-1
4914	3	Bottom Rail, 1-Way, for adding an extra lever for Ref. A and Aa.....	B-4259-1
	3a	Bottom Rail, 1-Way, with Cap, Bolts and Pins, for Ref. A and Aa (Inc. 1-3, 1-4, 1-19, 2-12 and 2-20)...	B-4259-1
7873	3b	R. H. Bottom Rail, 1-Way, for adding an extra lever for Refs. B and Ba.....	B-4259-2
	3c	R. H. Bottom Rail, 1-Way, with Cap, Pin and Bolts (Inc. 1-3b, 1-19, 1-4, 2-20 and 2-12).....	B-4259-2
94505	3d	L. H. Bottom Rail, 1-Way, for adding an extra lever for Refs. Bb and Bc.....	B-4259-2
	3e	L. H. Bottom Rail, 1-Way, with Cap, Pin and Bolts (Inc. 1-3d, 1-19, 1-4, 2-20 and 2-12).....	B-4259-2
29579	4	Cap only, for Bottom Rail.....	C-6551-1
68054	5	L. H. Front or Back Rail, with Cap, Filler Block and Bolts for 1-lever extension (Inc. 1-5a, 3-11, 1-14 and 1-6) for double hole locking brackets.....	B-7974-10
37700	5a	L. H. Front or Back Rail only for Ref. 5.....	B-7974-10

UNION SWITCH & SIGNAL COMPANY

**THE SAXBY AND FARMER INTERLOCKING MACHINE
ARRANGED FOR VERTICAL AND HORIZONTAL
LEADOUT**

**FITTINGS FOR ADDING AN EXTRA LEVER TO THE
END OF AN EXISTING MACHINE
(Continued)**

**Order by Plate, Piece, Reference and Abbreviated Description Given in
Heavy Face Type Only.**

Drawing references are shown for convenience in checking material with shipping lists and invoices.

Piece	Ref.	Description	Drawing Reference
68055	5b	R. H. Front or Back Rail, with Cap, Filler Block and Bolts for 1-lever extension (Inc. 1-5c, 3-11, 1-14 and 1-6) for double hole locking brackets.....	B-7974-10
37701	5c	R. H. Front or Back Rail only, for Ref. 5b.....	B-7974-10
25022	6	Cap only for Refs. 5 and 5b.....	B-7974-6
79189	7	R. H. Front or Back Rail, with Cap and Bolt for 1-lever extension (Inc. 1-7a, 1-8 and 1-11) for single hole locking brackets.....	B-7974-5
79179	7a	R. H. Front or Back Rail only, for Ref. 7.....	B-7974-5
79188	7b	L. H. Front or Back Rail, with Cap and Bolt for 1-lever extension (Inc. 1-7c, 1-8 and 1-11) for single hole locking brackets.....	B-7974-5
7951	7c	L. H. Front or Back Rail only, for Ref. 7b.....	B-7974-5
7952	8	R. H. Cap only, for front or back rail, for 1-lever extension.....	B-7974-5
79178	8a	L. H. Cap only, for front or back rail, for 1-lever extension.....	B-7974-5
79172	9	Intermediate Rail, with Cap, Filler Block and Screw as shown for 1-lever extension (Inc. 1-9a, 1-10, 4-21 and 1-18).....	B-7974-10
37702	9a	Intermediate Rail only, for Ref. 9.....	B-7974-10
25200	10	Cap only, for Ref. 9.....	B-7974-7
	11	Tap Bolt, $\frac{3}{8}$ "x1 $\frac{3}{4}$ " Hex. Hd. S. for attaching Cap to front or back rails.	
6951	12	Bolt, $\frac{3}{4}$ "x3" Sq. Hd. with $\frac{3}{4}$ " Hex. Nut for attaching bottom rail to leg.....	B-8132-3

UNION SWITCH & SIGNAL COMPANY

THE SAXBY AND FARMER INTERLOCKING MACHINE ARRANGED FOR VERTICAL AND HORIZONTAL LEADOUT

FITTINGS FOR ADDING AN EXTRA LEVER TO THE END OF AN EXISTING MACHINE

(Continued)

Order by Plate, Piece, Reference and Abbreviated Description Given in
Heavy Face Type Only.

Drawing references are shown for convenience in checking material with
shipping lists and invoices.

Piece	Ref.	Description	Drawing Reference
2356	13	Dowel Pin.....	B-8063-1
37703	14	Filler Block only, for Ref. 5 and 5b.....	C-6551-2
	15	Taper Pin No. 8, 2" long.	
4909	16	Bolt, $\frac{1}{2}$ "x $1\frac{3}{4}$ " "T" head with $\frac{1}{2}$ " Hex. Nut for at- taching Top Plate and End Strip to Leg.....	8280-15
	17	Cap Screw, $\frac{1}{2}$ "x $1\frac{1}{8}$ " Hex. Hd., for attaching Top Plate to Leg.	
37704	18	Filler Block only, for Ref. 9.....	C-6551-2
4801	19	Pin, 1"x $4\frac{7}{8}$ ".....	B-10234-1
	20	Bolt, $\frac{1}{2}$ "x2" Sq. Hd. with $\frac{1}{2}$ " Hex. Nut, for fastening Cap to Bottom Rail.	
49940	21	Screw.....	8190-225